

PP-9742W



- XPPC continues the XPOS's DNA and keep it slim design.
- Using Intel Alder Lake 12th Generation Processor & Support High-speed PCIe M.2 SSD.
- Flexible mounting option: Desktop, Wall-mounted, or Panel-mounted.

01/ 22"

Performance Panel PC

XPPC PP-9742W is an ultra slim All-in-One panel PC.

- Platform: Intel Alder Lake
- Processor: Intel H610
- System Storage: 1 x M.2 M Key (PCIe)



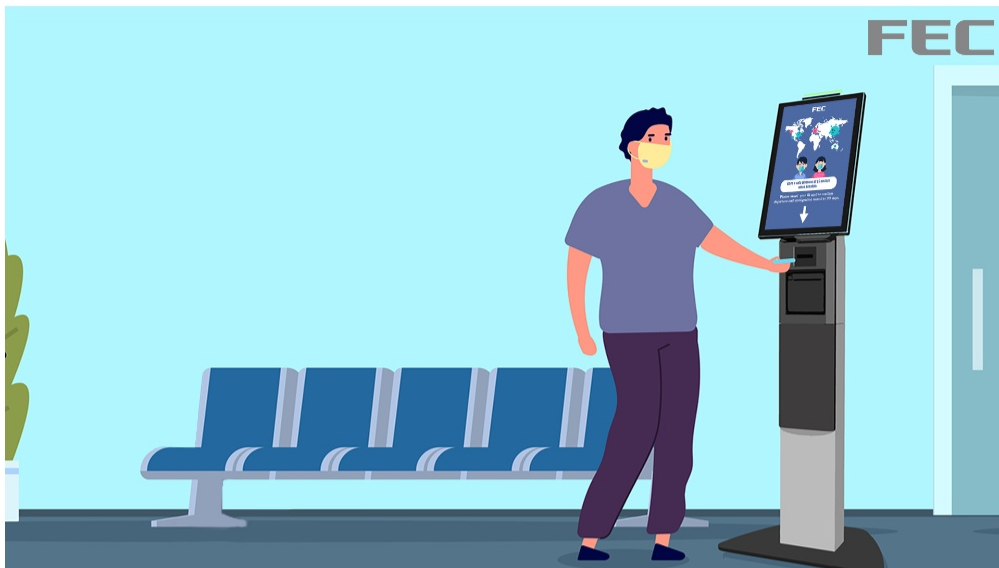
02/ Digital Information Signage

FEC 22 inch Panel PC can be used in different way, with universal VESA wall mount design, they can be easily mounted on any flat surface or connect with FEC Stand to use as desktop type,

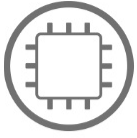


03/ Large Enterprise Environment

Large screen All in One Panel PC is perfected for digital signage, product display, industrial control system or apply with self-ordering system.



Specifications



CPU

- Intel Core i3 12100TE 5M Cache, 2.1GHz
- Intel Core i5 12500T 7.5M Cache, 2.0GHz



Memory

- 4GB Standard, Max 32 GB (1 x So-DIMM DDR4)



Storage

- 1 x M.2 M Key (PCIe)



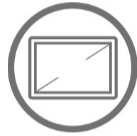
Connection

- 1 x M.2 E Key 802.11ac + BT 4 (Optional)



Speaker

- 2 x 2W Internal Speaker



Display

- 22" TFT, 1920 x 1080



Touch

- True-Flat PCAP



Brightness

- 250 nits



MTBF

- 70K Hours



Power

- 20V / 90W or 20V / 130W External Adapter



OS

- Windows 10 IoT Enterprise
- Windows 11 IoT Enterprise (Est. available in Q3 2023)
- Linux



TPM

- TPM2.0: dTPM and Intel PTT



Mounting

- VESA 100 x 100 mm



Certification

- FCC / CE Class B



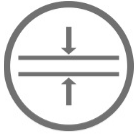
Appearance

- Aluminum Die-Casting + Plastic
- Galaxy Grey



Temperature

- Operation: 0 °C ~ 40 °C (32 °F ~ 104 °F)
- Storage: -20 °C ~ 60 °C (-4 °F ~ 140 °F)



Dimensions (W x H x D)

- Product: 512.30 x 308.91 x 38.8 mm
- Carton: 662 x 210 x 440 mm



Weight

- Net: 5.5Kg
- Gross: 7.0 Kg



Port

- 1 x RJ11 Cash Drawer (12/24V)
- 3 x USB 3.0 Type A
- 1 x USB 2.0 Type A
- 1 x SMART DD (Reserved for FEC 2nd Display)
- 1 x HDMI
- 2 x RJ45(RS232)
- 1 x Giga LAN
- 1 x 20V DC-In
- 1 x SMART IO (Reserved for optional addition IO interface)
- 1 x SMART DP (Reserved for FEC Customer Display or 2nd Display)



Optional

- Universal IO (Reserved for 1 of 4):
 - 1 x 24V P-USB
 - 1 x 12V P-USB
 - 2 x USB 2.0
 - 1 x RJ45 (RS232)
- SMART IO for converting cable to (1 of 5):
 - 1 x DB9 (RS232)
 - 1 x 12V DC Out
 - 1 x 12V P-USB
 - 1 x USB Type B 2.0 + 24V DC Out
 - 1 x USB Type B 2.0 + 12V DC Out